

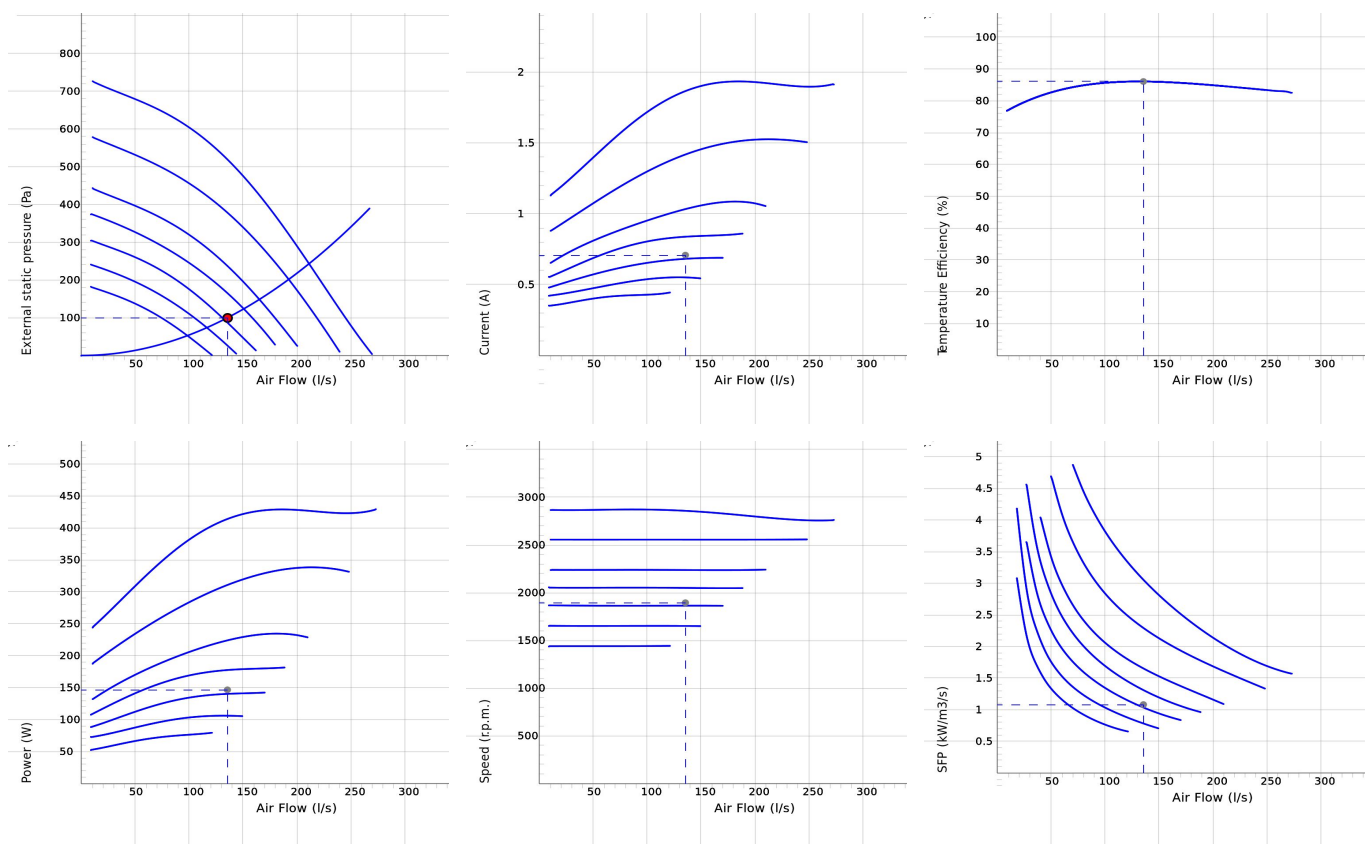
HERU 250 T EC 2 (ARCHIVED 2020-08-26)



- Floor model with top connection.
- Designed for supply and exhaust air ventilation with energy recovery.
- Suitable for installation in apartments, small houses, offices and other premises where there are stringent requirements on the indoor environment.
- High temperature efficiency 86%, low energy consumption (SFP), low sound level, high operating reliability and provides clean indoor air.
- Unique design minimizes all thermal bridges.
- For easy handling, the unit is remote controlled using the wireless control unit for operation and monitoring.
- Comes prepared for Modbus communication via RS485 (accessory needed).
- Airflow is generated by two silent radial fans with EC motors and impellers with backward curved blades.
- The fans are connected with quick connectors and are very easy to remove for cleaning.
- A regenerative, non-hygroscopic, aluminum rotating heat exchanger located in the center of the unit. The heat exchanger can also be removed for cleaning.
- Incinerable panel filter ISO ePM1 50% as standard, for both exhaust and supply air. The filter is very easy to change.
- Integrated controls for heating/cooling.
- Available with or without integrated electric heater.
- The unit is made from aluminum-zinc-plated steel and insulated.
- For placement in warm areas, such as laundry, storage or utility rooms.
- Available in either right-hand or left-hand design.
- Integrated silencer on the supply air and extract air side.

NOTE! The warranty of The HERU is only valid if accessories/equipment (e.g. filters) from H. Östberg AB are used.

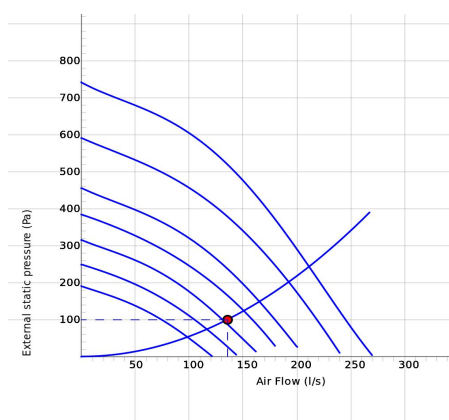
DIAGRAMS



Work Point

Air Flow (l/s) 136	External static pressure (Pa) 100	Power (W) 147	Speed (r.p.m.) 1895	Current (A) 0.708	Efficiency (%) 86.1	SFP (kW/m ³ /s) 1.08	Voltage (V) 6.17
-----------------------	--------------------------------------	------------------	------------------------	----------------------	------------------------	------------------------------------	---------------------

SOUND DATA



	Tot	63	125	250	500	1k	2k	4k	8k
Supply Lw dB(A)	59	47	49	51	51	49	53	46	37
Extract Lw dB(A)	52	40	41	43	48	46	40	35	23
Surrounding Lw dB(A)	42	39	33	33	34	29	25	26	27
Surrounding Lp dB (A) 3m	35								

Work Point

Air Flow (l/s) 136	External static pressure (Pa) 100	Power (W) 147	Speed (r.p.m.) 1895	Current (A) 0.708	Efficiency (%) 86.1	SFP (kW/m3/s) 1.08	Voltage (V) 6.17
-----------------------	--------------------------------------	------------------	------------------------	----------------------	------------------------	-----------------------	---------------------

TECHNICAL DATA

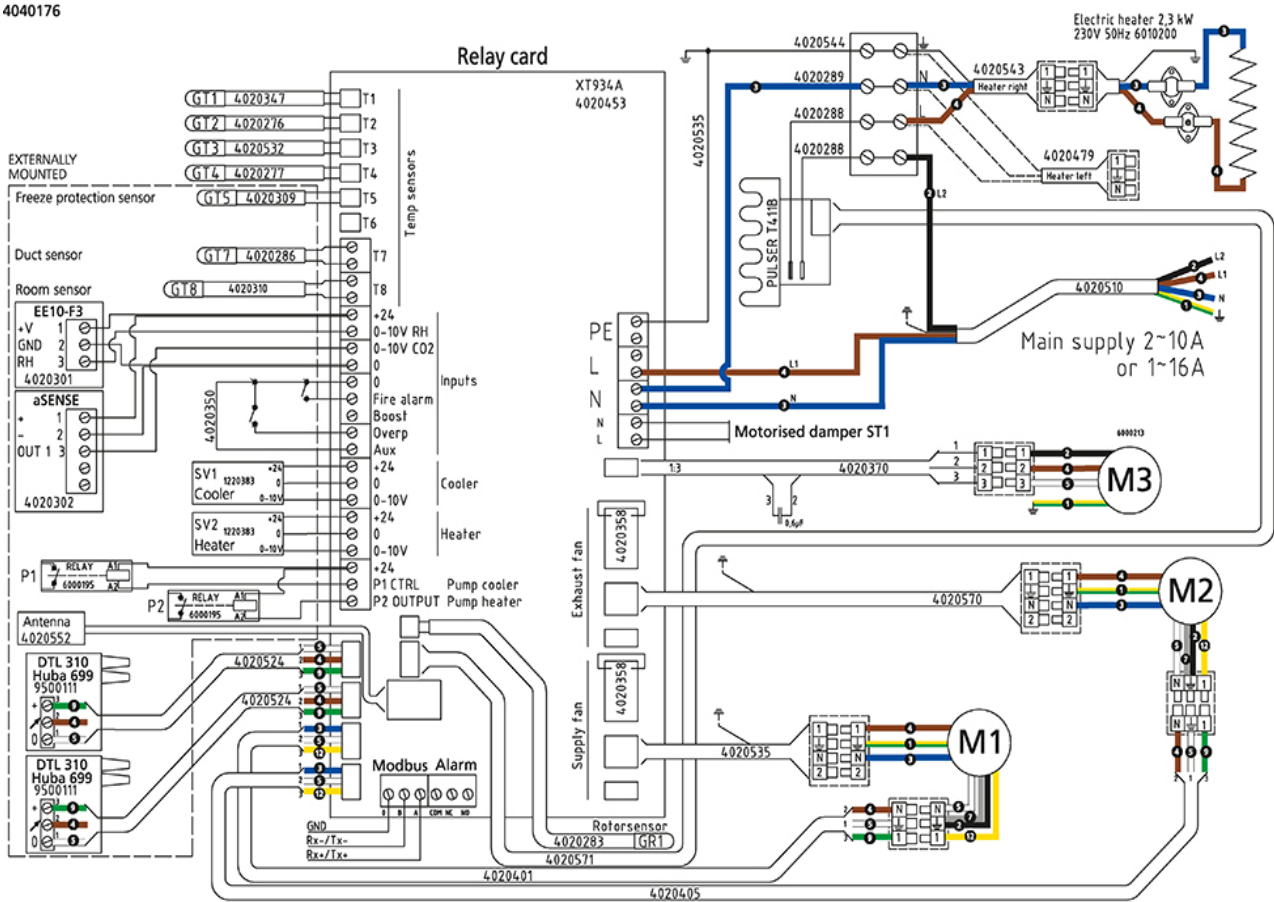
Parameter	HERU 250 T EC 2 AR 2300W 8010422		HERU 250 T EC 2 CR 8010423		HERU 250 T EC 2 AL 2300W 8010424		HERU 250 T EC 2 CL 8010425	
	Value	Unit	Value	Unit	Value	Unit	Value	Unit
Voltage	230	V	230	V	230	V	230	V
Phase	1-2	~	1	~	1-2	~	1	~
Frequency	50	Hz	50	Hz	50	Hz	50	Hz
Power	2760	W	459	W	2760	W	459	W
Power, fans	432	W	432	W	432	W	432	W
Power, heater	2300	W	-	W	2300	W	-	W
Current	12.1	A	2.05	A	12.1	A	2.05	A
Current, fans	1.95	A	1.95	A	1.95	A	1.95	A
Current, heater	10.0	A	-	A	10.0	A	-	A
Speed	2790	r.p.m.	2790	r.p.m.	2790	r.p.m.	2790	r.p.m.
Sound pressure level at 3 m	41	dB(A)	41	dB(A)	41	dB(A)	41	dB(A)
Weight	146	kg	143	kg	146	kg	143	kg
Enclosure class	41	IP	41	IP	41	IP	41	IP
Duct connection	250	mm	250	mm	250	mm	250	mm
Max. flow	271	l/s	271	l/s	271	l/s	271	l/s
Max. pressure	740	Pa	740	Pa	740	Pa	740	Pa
Voltage range	220-240	V	220-240	V	220-240	V	220-240	V

ECODESIGN

Parameter	Value	Unit
(a) Manufacturer	Östberg	-
(b) Model code	HERU 250 T EC 2 (archived 2020-08-26)	-
(c) SEC value	-41.1	kWh/m ²
SEC class	A	-
(d) Declared type	RVU / BVU	-
(e) Type of drive	Variable speed drive	-
(f) Type of heat recovery	Regenerative	-
(g) Thermal efficiency	85%	%
(h) Max. flow rate (@100Pa)	882	m ³ /h
(i) Power at max. flow rate	423	W
(j) Sound power level	41	dB LwA
(k) Reference flow rate	0.174	m ³ /s
(l) Reference pressure difference	50	Pa
(m) SPI	0.33	W/(m ³ /h)
(n) Type of control/ctrl factor	Local demand control	-
(o) External (and internal) leakage rate	1.47 (2.58)	%
(p) Mixing rate	N/A	-
(q) Visual filter warning	In remote control	-
(r) Instruction supply/exhaust grilles	See manual	-
(s) Disassembly instructions	fsp.ostberg.com	-
(t) Airflow sensitivity	N/A	-
(u) Air tightness	N/A	m/s
(v) AEC	220	kWh
(w) AHS average	4618	kWh
AHS warmer	2088	kWh
AHS colder	9034	kWh

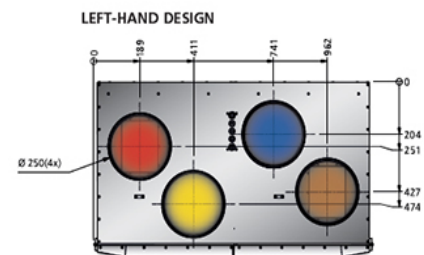
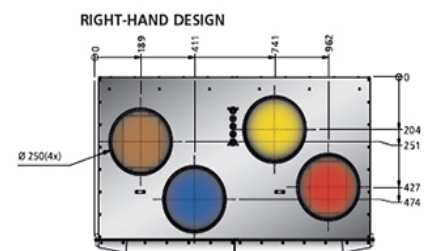
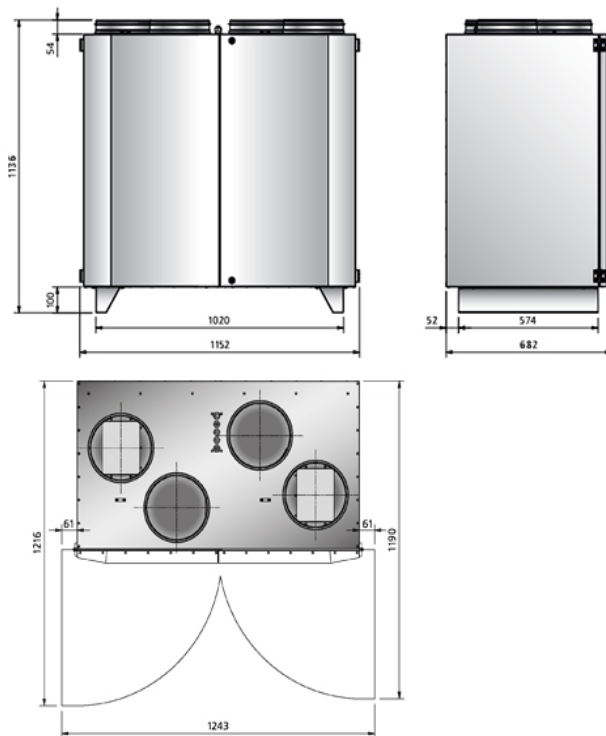
WIRING DIAGRAM

4040176



- Ⓜ = Fan Motor
- Ⓜ1 = Fan Motor
- Ⓜ2 = Fan Motor
- Ⓜ3 = Rotor Motor
- ① = Yellow/Green
- ② = Black
- ③ = Blue
- ④ = Brown
- ⑤ = White
- ⑥ = Orange
- ⑦ = Grey
- ⑧ = Red
- ⑨ = Green
- ⑩ = Violet
- ⑪ = Quick switch
- ⑫ = Yellow

DIMENSIONS



ENGLISH

- Supply air
- Extract air
- Exhaust air
- Fresh air

SVENSKA

- Tilluft
- Frånluft
- Avluft
- Utluft

DEUTSCH

- Zuluft
- Abluft
- Fortluft
- Frischluft

SUOMI

- Tuloilma
- Poistoilma
- Jäteilma
- Ulkoilma

ITALIANO

- Aria di immissione
- Aria di estrazione
- Sfiato
- Aria esterna

POLSKI

- Powietrze nawiew
- Powietrze wywiew
- Powietrze usuwane
- Powietrze z zewnątrz

ACCESSORIES

Electrical accessories



Humidity/temperature sensor



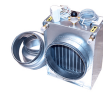
Carbon dioxide sensor CO₂



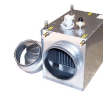
Room sensor



Pressure Sensor Kit



Heater Kit Water, HERU 200/250 T



Cooling coil Kit, HERU 200/250 T



Control Kit



Remote control



Remote control with Modbus



Control board



Antenna



Extension cable, antenna



Freeze protection sensor



Duct sensor



Damper motor



Relay pump control

Mechanical accessories



Adjustable feet



Novibra Mat



Filter Kit HERU 200/250 T



Silencer LDC 250